



# Altadena Valley Presbyterian Church

*Birmingham, AL*

Church Profile

# Table Of **Contents**

- ▶ Welcome Letter **2**
- ▶ Mission, Vision, & Values **3**
- ▶ Ministries **4**
- ▶ Location **5**
- ▶ Demographics **6**
- ▶ Finances **6**
- ▶ Unique Strengths **7**
- ▶ Areas of Growth **8**
- ▶ Church History **9**
- ▶ Facilities **10**
- ▶ Staff & Officers **11**
- ▶ Committee Members **12**
- ▶ Pastor Profile **13**
- ▶ Contact Us **14**

# Welcome

Greetings from the Pastoral Search Committee of Altadena Valley Presbyterian Church (AVPC)!

We are honored by your interest in AVPC, our “community of Christ’s coming kingdom” in Birmingham, Alabama, as we seek the Lord’s guidance in who we will call and welcome as our next senior pastor.

It is our joy to share with you this glimpse into who we are as AVPC. We hope that this overview helps you as you prayerfully consider and discern what God has for you in this season of life.

May the Lord bless you and His church as we seek His will together.

*And so, from the day we heard, we have not ceased to pray for you, asking that you may be filled with the knowledge of His will in all spiritual wisdom and understanding, so as to walk in a manner worthy of the Lord, fully pleasing to Him: bearing fruit in every good work and increasing in the knowledge of God; being strengthened with all power, according to His glorious might, for all endurance and patience with joy; giving thanks to the Father, who has qualified you to share in the inheritance of the saints in light. Colossians 1:9-12*



# AVPC Vision & Mission

---

## *Vision*

A community of Christ's coming kingdom, bringing hope to a broken world.

## *Mission*

Loving God and loving others as we are transformed by His love.

## *Core Values*

We believe that God has called us to be fruitful and to multiply. Therefore, as we grow, we will plant churches and partner with others to advance His Kingdom in our city and beyond.

**A Worshiping Community** Since the gospel frees us from a guilty conscience and from believing lies about God, we are able to enjoy God and worship Him freely. It is only in God-centered worship that we are delivered from the bondage of the self-centered life, and such a God-centered life is the doorway into the joy and purpose He designed us to experience.

**A Healing Community** Since the gospel brings healing to broken sinners, we are a community where such healing is experienced. Though all healing comes from God, He uses His people to be His instruments in this. We do so through such gospel qualities as acceptance, gentleness, patience, love, safety and hope.

**A Teaching Community** Since God has chosen to bring the gospel to us through Word and Spirit, we teach the whole Bible to the whole person through the power of the Spirit.

**A Welcoming Community** Since the gospel announces God's welcome of unworthy sinners through Christ, we are a place where people are welcomed. Though friendliness is part of this, it goes beyond friendliness to an attitude of acceptance that offers a seat at the table to anyone who will come. While being true to our context, we strive to remove all boundaries to inclusion except the stumbling block Jesus is to some. We give of ourselves to pursue others with this good news of welcome and not wait on them to come to us.

**A Giving Community** Since the heart of the gospel is God's generosity to us at great cost to Himself, we reach out and give generously of ourselves to others, both those inside the church and those outside the church. We give our time, money, people, and facilities, sharing what God has so freely given to us for the sake of His kingdom.

## *Our Denomination*

AVPC is a member of the Presbyterian Church in America (PCA). The PCA subscribes to the Westminster Confession of Faith, together with the Larger and Shorter Catechisms, and the Book of Church Order, all of which are subordinate to the Scriptures of the Old and New Testaments, the inerrant Word of God.

# AVPC Ministries

## **Children (Infant to Fifth Grade)**

- Nursery
- Sunday Morning Worship Center
- Sunday School
- Bridge Night (Sunday night program)
- Camp Solid Rock (VBS)
- Homeschool Wednesday Morning

## **Youth (Sixth Grade to Twelfth Grade)**

- Jr. High & Sr. High Sunday School
- Jr. High & Sr. High Wednesday Night Small Groups
- Sunday Evening Youth Group
- The Edge (Jr. High Retreat)
- Missions Trip (Sr. High)
- Winter Retreat

## **College/Young Adult**

- Sunday School
- Monthly Social Gatherings
- Summer Retreats

## **Adult**

- Women's Bible Study
- Women's Winter Retreat
- Women's Luncheons
- Men's Bible Studies/Small Groups
- Men's Fall Retreat
- Adult Sunday School Classes
- Community Groups

## **Prayer**

- Boiler Room Prayer (during worship service)
- Periodic Prayer & Praise Services
- Prayer Chain (church-wide email distribution)
- Covenant Moms in Prayer

## **Worship**

- Praise Team
- Choir
- WACK (Worship & Arts Camp for Kids)
- Sound & Tech Team

## **Mercy/Outreach**

- Enfold (Encouraging & Nurturing Families & Others Living with Disabilities) Ministry
- Care Teams (specialized & individualized assistance)
- Greeters
- God's House Kindergarten
- Trunk or Treat
- Altadena Park Events

## **Missions**

- Missions Conference
- Short Term Trips
- Local, National, & Global Missionaries Supported (16 domestic, 37 international, & 7 Christian organizations)

# About Birmingham

**Birmingham is located in the north-central region of Alabama. It has a unique connection to the making of iron and steel and was called “The Magic City” when its population boomed early in its founding.**

It is “magic” for many other reasons, too. Nestled within a series of valleys and ridges in the foothills of the Appalachians, it is a beautiful place to live. The Greater Birmingham Metro Area is made up of six counties. Surrounding the main city, there are numerous suburbs including Hoover, Vestavia Hills, Homewood, Pelham, and more. Many suburbs have their own school system and government, making Birmingham a fairly large city with a small town feel.



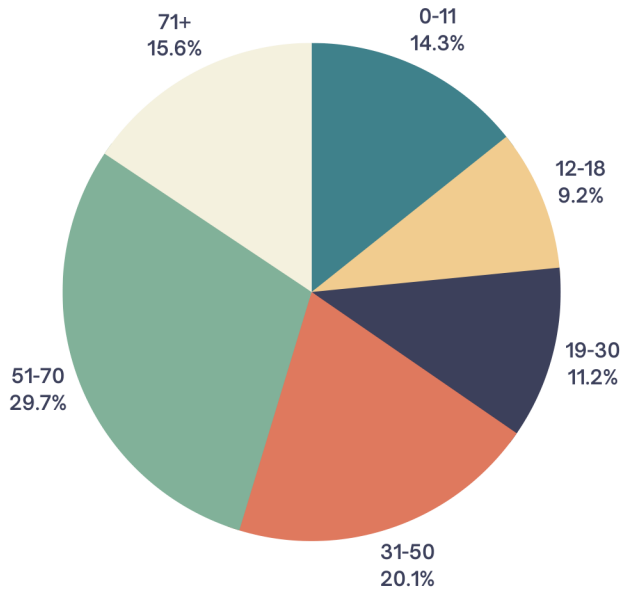
The city is home to Samford University, Birmingham-Southern College, and the University of Alabama at Birmingham, which boasts one of the finest medical and research centers in the nation.

Birmingham is an easy drive to many popular vacation spots, a few being the beaches of Alabama and Florida in the south and the Great Smoky Mountains in the north. Its affordable housing, dynamic arts scene, and convenient location make it an appealing place to call home.



# AVPC Demographics

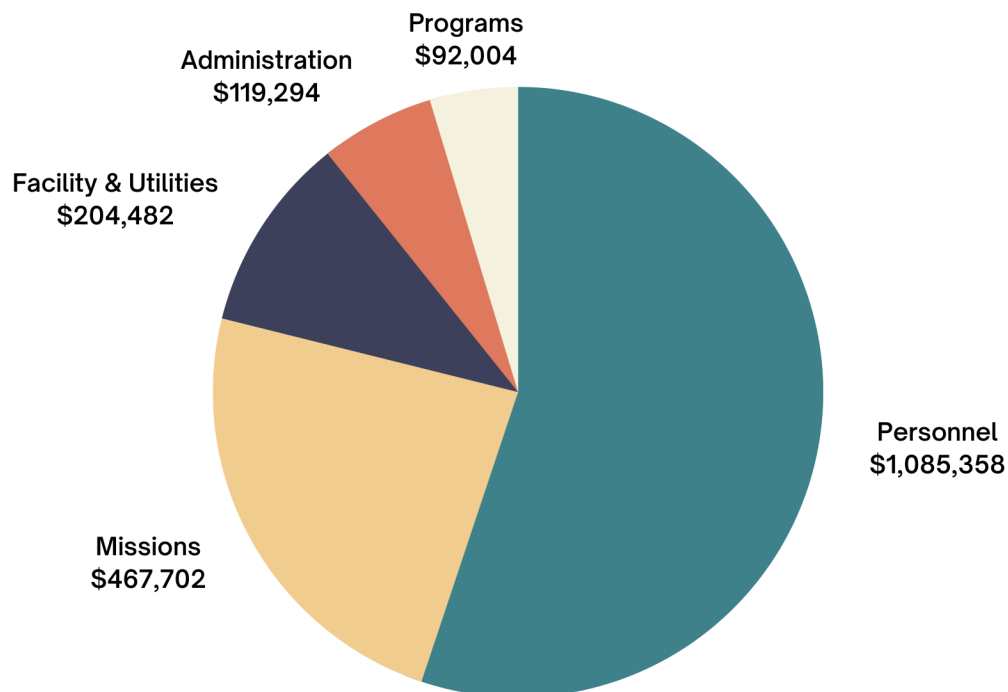
During 2023, AVPC has seen average weekly attendance increase from 296 (2022) to 333 (2023), a 12.5% increase. AVPC's children's roster has increased from 51 infant through sixth graders in 2019 (pre-pandemic) to 104 infant through fifth graders in the fall of 2023 (sixth graders are no longer included in the children's ministry roster as they are part of the Youth ministry).



This increase in church attendance can be attributed to a renewed focus on building a sense of community and connection among members through our Small Groups, Outreach, and Adult and Children's ministries. Some new attendees have been directly invited to the church through Outreach efforts.

The pie chart to the left shows total attendance (members and regular attenders) by age range

# AVPC Finances



# AVPC Unique Strengths

## Unique Strengths

God has been faithful to bring fruitfulness to our ministry at AVPC. Over many years, we have seen sustained fruit and blessing in several areas we believe to be unique for a church our size.

**Worship** Worship is the heartbeat of AVPC. Our worship is a blended service where we embrace the hymns of the faith as well as more contemporary praise music. We are blessed with a significant number of gifted musicians and vocalists (including youth) for a church our size. We are also blessed with a high view of the Scriptures resulting in quality gospel-centered preaching.

**Healing** Two of our core values are to be a welcoming community and a healing community. God has born much fruit in this area of AVPC. We see many come to us hurting and in need of restoration. We have been described as being a “soft place to land”. We strive to teach and live the gospel of grace as the foundation for life and ministry. As we receive God’s grace into our life, we desire to extend that grace to others.

**Missions-Minded** AVPC has a history of supporting missions, both at home and to the ends of the earth. Our annual Faith Promise budget for missions remains near 25% of the church budget. We currently support 16 domestic and 37 international missionaries, plus 7 Christian organizations.





# AVPC Areas of Focus

## Areas of Focus

During this time of preparing for a pastoral transition, these are some areas where we want to continue to grow our effectiveness and fruitfulness.

**Assimilation** While we are a welcoming congregation, we want to better guide visitors to a place of belonging in the AVPC community. We are seeking to align our officers/staff along with our ministry areas to love our visitors well. We are also looking for ways to better communicate with our congregation, so that visitors understand a clear path to getting involved at AVPC.

**Outreach** In addition to our ongoing training and outreach efforts, we have recently begun conducting a Sunday service at a retirement community next door to the church. We also own land across the street from the church (Altadena Park), which is used for overflow parking, and has been transformed into a neighborhood park with a walking path. Altadena Park is heavily used by those living in the neighborhood, so we are looking for ways to use the park to serve our neighbors and reach them with the gospel.

**Covenant Community** With the current turmoil in our culture following the pandemic, we have seen the need for a renewed focus on building our covenant community. With a surge in growth in the number of young families with younger children, we want to increase our focus on discipling our children and youth. We are looking at ways to increase the scope and effectiveness of our shepherding. We are also seeking to improve our church-wide communication, with the goal of engaging more of the church in ministry opportunities.



# AVPC History

Altadena Valley Presbyterian Church began in 1854 under the name Rocky Ridge Cumberland Presbyterian Church, near the current facilities of Briarwood Presbyterian Church.

AVPC moved to its current facilities in 1912 as the result of a church split over whether or not the church should maintain its affiliation with the Cumberland Presbyterian denomination or establish a new affiliation with the northern Presbyterian Church. The group that moved to the church's current location chose to be members of the northern Presbyterian Church. The name of the church was changed to Acton Memorial Church, in honor of Zephaniah William Henry Acton, a charter member and founder of the church. The rolls of the church were dominated by the Acton name in those days.



Until the late 1960's, the church struggled in different ways, with periods of prosperity followed by seasons of hardship. But with the community beginning to grow around it, and with the blessing of God through some excellent pastoral leadership, the church began to grow in the late 1960's. The name was changed in 1968 to its current name, reflecting the determination of the church to reach its community.

Several building programs were initiated and completed during the 1970's and early 80's, including the 1983 razing of the old sanctuary and the construction of our current sanctuary as a replica of that old building. On June 4, 1978, the congregation voted unanimously to change its denominational affiliation to the PCA.

The church has been blessed with multiple pastors over the years, but our current pastor, Brad Allison, has been the longest tenured pastor in the history of AVPC. He has faithfully served the church for the past 31 years.

# AVPC Facilities

The campus of Altadena Valley Presbyterian Church consists of the main church building, God's House Kindergarten, the Altadena House for Youth and office spaces, and a 4.3 acre passive park.

The main church building houses the Sanctuary, which holds about 275 people, including a parlor overflow, which can accommodate 30-35 people and a choir loft, which holds around 35 chairs. The Fellowship Hall can hold around 175 people. The church offices are located inside this building, in addition to a conference room, choir room, library, and kitchen.

God's House Kindergarten is connected to the main building by an outdoor courtyard and covered walkway. There are two playground areas located behind the building.

Altadena House is across the street from the main church building and provides a space for the Youth as well as several office spaces for church staff. The lawn is a great place for our Children and Youth to play.

Directly across the street from the church, Altadena Park provides 4.3 acres of passive park space, partially bordered by a small creek. A walking path circles the outer edge of the park and connects to a larger Vestavia Hills Linear Trail Park. A large recreational field provides mixed-use opportunities for sports or gatherings. There are several picnic benches and a newly installed workout station located off the walking path.



# AVPC Staff & Officers

---

## Pastoral Staff

Bradford E. Allison  
*Senior Pastor*

Stephen Whitner  
*Associate Pastor -  
Worship*

Michael MacCaughelty  
*Associate Pastor -  
Outreach/Mercy*

Blake Harris  
*Associate Pastor -  
Adult Ministries*

## Church Leaders

### *Elders*

David Allen Steve Barley Brian Beckett Grahame Bobo Clint Cvacho Nicholas Ireland  
Brent McClenny Jack Morris Barry Parker Karl Poythress Thomas Prettyman Danny Wachs

### *Deacons*

Woody Armstrong Hunter Boggs David Coley Al Foster Trey Holmes Matt Jackson  
Russell Lloyd Josh Moore John Peters Josh Putman Bill Sommer Rob Wise Ed Wofford

---

### Women's Ministries

Heather Sommer  
*Women's Ministry Director*

### Children's Ministries

Catie Lumpkin  
*Children's Director*

Alli Campbell  
*Nursery Director*

### Young Adults & Men's Ministries

Blake Harris  
*Associate Pastor*

Mary Frances Snyder  
*Children's Administrative Assistant*

Amanda Amerson  
*Children's Ministry  
Assistant*

Caroline Cwynar  
*Preteen  
Coordinator*

### Youth Ministries

Clint Cvacho  
*Youth Director*

Callen Moyer  
*Girls' Discipleship Director*

Michael Whitner  
*Youth Worship Leader*

### Administrative & Facility

Anna Waldrip  
*Church Administrator*

Connor Bingham  
*Administrative Assistant*

Heather Sommer  
*Financial Secretary*

Dave Mayhew  
*Facilities Manager*

Hillary Gamble  
*Kitchen Coordinator*

### Worship Ministries

Heather Sommer  
*Worship Ministry Assistant*

Young jin Jeon  
*Organist*

Carol Apol & Ricky Klose  
*Sound Ministry Directors*

AVPC

# Pastoral Search Committee

The Pastoral Search Committee is composed of 11 members elected by the congregation of AVPC.

Jamie Lumpkin, Chairman

Lauren Moore, Clerk

Marsha Wakefield, Prayer Chair

Austin Amerson, Communications Co-Chair

Heather Sommer, Communications Co-Chair

Woody Armstrong, Deacon

Jim Baird

Dan Dougherty

Diane Shepherd

Christina Thomas

Danny Wachs, Ruling Elder

# AVPC

## Pastor Profile

Altadena Valley Presbyterian Church (AVPC) is looking for a senior pastor to lead the congregation in our growth in Christ (loving God) and our boldness to proclaim the gospel to a broken and hurting world (loving others). The church as a whole has been covering this process in prayer and we are thankful you have taken the time to read over this pastor profile.

The pastor profile will give you an overview of the gifts, strengths, and experience the congregants seek in their next senior pastor. To find out more about AVPC and the congregation, please refer to the Church Profile.

We are *praying* that God gives us a pastor who:

- Meets the qualifications set forth in I Timothy 3:1-7 and Titus 1:5-9.
- Prayerfully leads with humility, grace, and love, following the example of Jesus Christ.
- Preaches the word of God faithfully and accurately, using expository preaching as his primary method, applying the gospel of grace to practical living.
- Leads and works collaboratively with the Session, respecting their authority and input and fostering a spirit of unity and trust among them.
- Has a heart for people, especially those who are hurting, struggling, or marginalized, and shows empathy, compassion, and care.
- Is aware of his own strengths and weaknesses, demonstrating approachability and authenticity.
- Lives a prayerful life of repentance and faith.
- Plans strategically for the future of the church, setting realistic and attainable goals and objectives, and communicates his vision clearly and persuasively to the congregation.
- Recognizes and helps develop the gifts and talents of others and encourages them to discover and fulfill their calling and purpose in life.
- Has excellent communication skills, both verbal and non-verbal. Knows when to speak and when to listen; when to ask questions and when to give advice; when to confront issues and when to let them go; and when to bring in others for consultation or assistance.

The *qualifications* for the senior pastor at AVPC are the following:

- Master of Divinity (or equivalent degree) from an accredited seminary
- Minimum of 8 years as an ordained pastor
- Ordained or ordainable in the PCA
- Experience working with a multi-pastor staff
- Experience in a church of 300 or more (desirable)
- Experience with a church budget of \$1 million or more (desirable)

# Get In Touch

AVPC has engaged with McGowan Global Institute to assist us in our search for a new pastor. For more information or to apply for this position, please contact Chuck Frost at [chuck@mcgowanglobal.com](mailto:chuck@mcgowanglobal.com) or by phone at (601) 946-6838.



## Find us at:

 4660 Caldwell Mill Road, Birmingham, AL 35243

 [www.avpc.org](http://www.avpc.org)